

Shuttle® X50 Barebone Installation Instructions

As a barebone, the device is delivered without memory and hard drive. Please note the following when installing or removing certain components. The device features two SO-DIMM slots for a maximum capacity of 2x 1GB DDR2-667/800 memory and one 2.5 inch drive bay for one S-ATA hard disk.

Please note and proceed as follows:

- a Only authorized and skilled personnel must intervene
- b Improper handling might damage the device which is not covered by warranty
- c To avoid damage of electrical components by electrostatic discharge (ESD), ensure that the static electricity of your body is diverted permanently before you touch electrical components. Use an earthing wrist strap and an anti-static ground mat, if possible.



- 1 Disconnect the device from the mains and put it on a soft base with the display facing downward and fold the stand vertically upward. Next, carefully remove the cap with the Shuttle logo that is clicked into place by six hooks. Carefully press the side of the cap with your fingertips to loosen it. Otherwise the cap can be loosened using a plastic card.

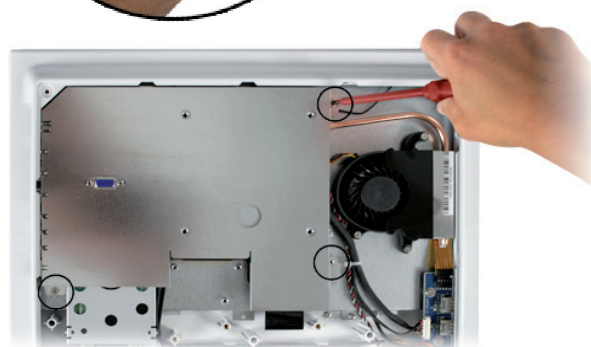
- 2 Loosen the four cross-head screws (or Phillips screws) to remove the stand.



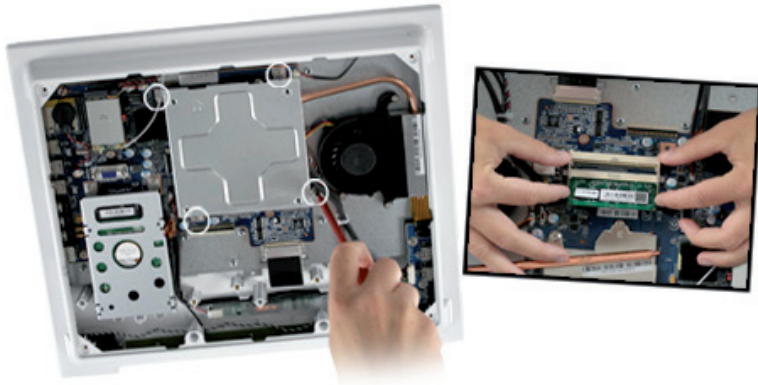
- 3 Remove the four cross-head screws that fix the case cover



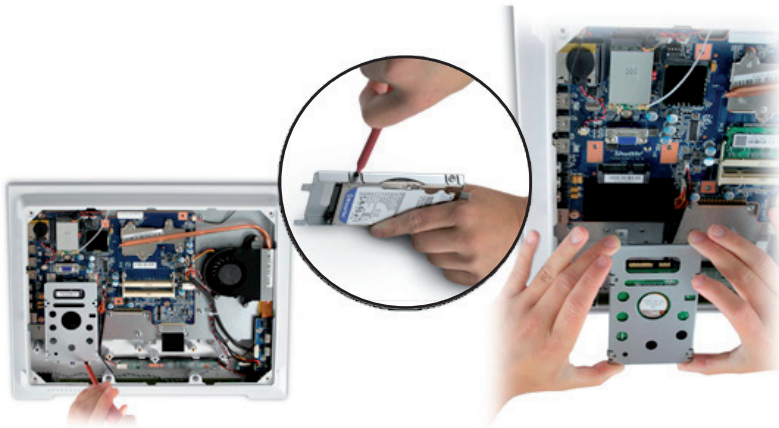
- 4 The case cover is clicked into place by several hooks. At the bottom of the case is a notch that can be used to lever the case cover out of place by carefully using a screwdriver or plastic card. Be sure to apply only little force in order not to break the hooks.



- 5 As the next step, remove the large electromagnetic shielding (EMI cover). This metal sheet is fixed by three cross-head screws.

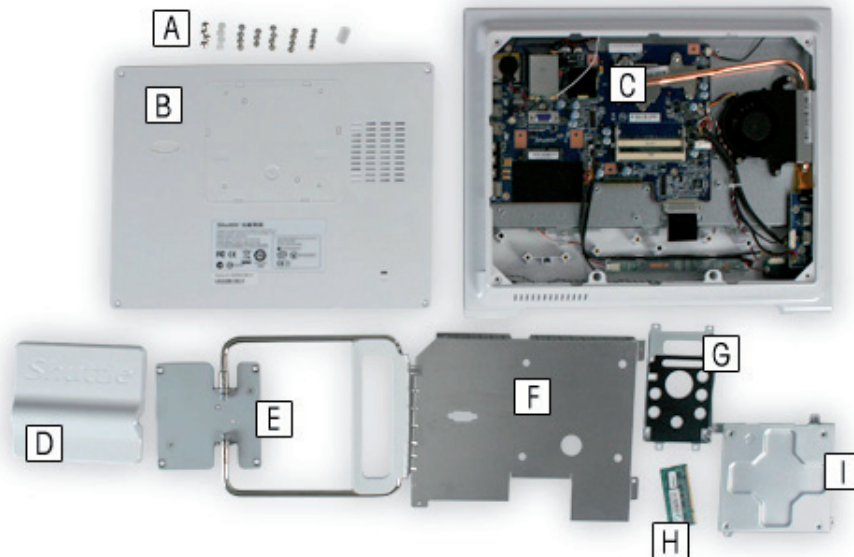


6 Another shielding is fixed by four screws. Only remove this part to install or exchange memory modules. To remove such memory modules, carefully bend back the cramps on both sides of the module. Please see the notch when installing the module to make sure it faces in the right direction.



7 Loosen the four screws of the drive cage and insert a 2.5 inch S-ATA hard disk with the connectors facing towards the metal sheet. Please then fix the hard disk with four screws and carefully push it in afterwards to connect it. Once this is done, also fix the drive cage with four screws.

8 Please re-mount the two electromagnetic shieldings, the case cover and the stand vice versa. Finally, click the cap with the Shuttle logo back into place and cover the four screw holes with the self-adhesive rubber coverings included in the delivery scope.



Overview of parts:

- A screws
- B case cover
- C X50-chassis
- D cap with Shuttle logo
- E stand
- F large shielding
- G hard disk
- H memory module
- I little shielding

The screws removed from left to right:

- hard disk (x4)
- drive cage (x4)
- little shielding (x4)
- large shielding (x3)
- stand (x4)
- rubber coverings (x4)
- case cover (x4)

