

Shuttle all-in-one touchscreen PC

The Shuttle X50 is an all-in-one PC boasting a 15.6-inch touchscreen LCD powered by Intel's Atom 330 dual-core processor. Intended for use in the home environment, the X50 takes up to 4GB of memory, a 2.5 inch hard disk drive and runs Windows Vista Basic and Windows XP Home. Equipped with Intel's GMA950 onboard graphics, it provides generous performance for daily computing with internet and office applications. A webcam, built-in speakers, card reader, WLAN and other features leave nothing you could ask for. Have any applications start up quickly by just touching the screen for working most swiftly and conveniently.

Shuttle All-in-one PC

Atom
Dual Core

X50



Feature Highlight

All-in-one design	<ul style="list-style-type: none"> • Full featured stylish PC platform • Small: 391 x 327 x 36 mm (WHL) • Stand can also be used as a handle • External, fanless power supply (65W) • Two color options: white and black
CPU & Chipset	<ul style="list-style-type: none"> • CPU: Intel ATOM 330 Dual Core • Chipset: Intel 945GC + ICH7
Memory	<ul style="list-style-type: none"> • 1, 2 or 4GB DDR2-533/667 (2x SO-DIMMs) • One 2.5" SATA hard disk up to 500GB
Operating system	<ul style="list-style-type: none"> • Windows XP Home
Display & Graphics	<ul style="list-style-type: none"> • 15.6" touchscreen display (1366x768) • Integrated GMA950 graphics, 224MB UMA • VGA Video output (clone mode)
Connectivity	<ul style="list-style-type: none"> • 5x USB • Audio: Mic, Line-in/out or 5.1 Line-out • Gigabit LAN, Wireless LAN (draft-n)
Built-in	<ul style="list-style-type: none"> • 4-in-1 card reader • 1.3 Megapixel webcam • 2x 2W speakers • Microphone • 100mm VESA mount
Application	<ul style="list-style-type: none"> • Basic, Home Media



Shuttle X50 - Special Product Features



All applications at your fingertips

The innovative touchscreen technology delivers the simplest operation possible and makes the screen the centre of action. Its high-quality design lets you control the whole range of multimedia - music, movies, video playback and web browsers start by just touching the screen.

Atom
Dual Core



Dual Core. Do more.

The vast majority of the existing netbooks and all-in-one PCs with an Intel Atom CPU uses the original Single Core version. In contrast to this, Shuttle's all-in-one PC X50 stands out from the crowd with its embedded Intel Atom 330 Dual Core processor, which is boosting the productivity of the PC system, particularly with regards to multithreaded applications.



All-in-one PC

Your complete PC system with many components already built in comes in just one single device! This includes the webcam, microphone, mainboard, display, touchscreen input interface, Wireless LAN module and speakers. Saves you more space, looks simply stylish, less wiring.



Slim and chic

Designed as space-savers, this 15.6 inch all-in-one desktop PC only measures 3.6cm in depth.



Fanless power supply

For whisper quiet operation



Kensington Lock

This is a small, metal-reinforced hole as part of an anti-theft system. (The lock-and-cable apparatus is not included.)



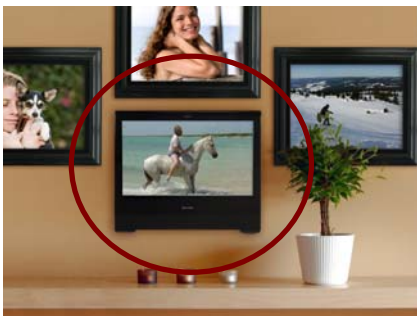
VGA Port

This VGA port can be used to connect a secondary external LCD display or beamer to the PC. It supports the clone mode operation.



Carrying handle

Cleverly, the X50's stand can be pulled up to serve as a handle - easy to move and light to carry with one hand.



VESA mounting

The stand on the rear can easily be removed unveiling four VESA mounting screw holes that can be used for mounting arms and other mounting devices from a variety of manufacturers.



Two color options

White and Black

Shuttle X50 Overview (Connectors, buttons, etc.)



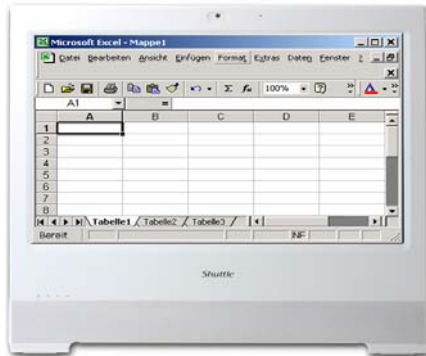
- | | | |
|---------------------------|---------------------------|------------------------------|
| 1 Touchscreen LCD display | 8 Stand (or handle) | 15 DC-input for power supply |
| 2 Webcam | 9 Kensington lock | 16 Card-reader |
| 3 Microphone | 10 Vent holes | 17 Audio Line-in |
| 4 Speakers | 11 Power on button | 18 Audio Line-out |
| 5 LEDs | 12 Stylus pen with holder | 19 Microphone input |
| 6 VESA mount | 13 USB connectors (5x) | 20 Gigabit LAN port (RJ45) |
| 7 VGA port | 14 LCD buttons | |

© 2009 by Shuttle Computer Handels GmbH (Germany). All information subject to change without prior notice. Pictures for illustration purposes only.

Shuttle X50 – Range of Applications



Entertainment
 Music, Movies,
 Photo gallery, TV*
 *) *) TV tuner USB stick
 required



Work
 Banking, Shopping,
 Office, Stock trading



Control
 Surveillance,
 Home Automation,
 Control device



P.O.S.
 Point of sales



Education
 In schools, at home,
 for children and adults



Communication
 Email, VoIP, Messenger,
 Blog, Video Conferencing



Digital Signage
 Visual advertising,
 entertainment, displaying
 information in public areas

Shuttle Barebone X50 Specifications

Chassis	Available colors: white or black Dimensions: 391.3 x 327 x 36 mm (WxHxL) = 4.73 litres With 100mm VESA mount
Operating system	Windows XP Home
Touch-screen	Touchscreen function support fingertip input Resistance and single touch technology Including stylus pen for the touchscreen
15.6-inch display	15.6" LCD display, ratio: 16:9 Resolution: 1366x768 = 1.05 Megapixels Adjustable backlight unit: High power LED OSD (On Screen Display)
Processor	Intel Atom 330 Dual Core processor (Codename: Diamondville) 2x 1.6 GHz core clock, 533 MHz FSB 2x 512kB L2 cache Supports Hyper-Threading (4 threads total) TDP = 8 watts
Memory	2x 144 pin SO-DIMM slots supports DDR2-533/667 Up to 4GB capacity (max. 2GB per module)
Chipset	Intel® 945GC+ICH7 Express Chipset
Hard disk drives	One 2.5" serial ATA hard disk drive up to 500GB
Card reader	Integrated multi-format 4-in-1 card reader (USB 2.0) Supports the memory card types: SD, MMC, MS and MS-pro
Integrated graphics	Intel Graphics Media Accelerator 950 (GMA950) with PCI-E x1 improved bandwidth, features 333MHz graphics core DX8/DX9 support and enhanced 3D performance Dynamic Video Memory Technology (DVMT) 3.0, shared Memory max. 224MB Video out: Analog 15pin D-Sub VGA Supports Dual Display operation in clone mode
5.1 audio Microphone Speakers	Audio Realtek® ALC 662 5.1-channel High-Definition Audio Three analog audio connectors (3.5mm): 1) Front Line out (head phone) 2) Rear Surround line-out (shared with microphone input) 3) Center line-out (shared with Line in) Front panel with integrated microphone and 2x 2W speakers

© 2009 by Shuttle Computer Handels GmbH (Germany). All information subject to change without prior notice. Pictures for illustration purposes only.

Gigabit LAN	Realtek 8111C Ethernet network controller (Gigabit) Supports 100 / 1.000 MBit/s operation Supports Wake-on-LAN (WOL)
Wireless LAN (Wifi)	Supports 802.11 b/g and draft-n
Connectors	VGA connector (D-Sub 15 pol., analog) 5x USB 2.0 GigaBit LAN (RJ45) Audio 5.1 channel (shared with microphone, line-in, line-out)
LED's and buttons	Hard disk LED Voice volume LED Power button On Screen Display button 1x panel backlight brightness setting
Power supply	External 65 power adapter (fanless) Input: 100~240V AC, 50~60Hz, Output: 19V DC Outline Dimension: 108x46x30mm, Color: Black
Accessories	X50 user guide X50 System manual Driver CDROM Recovery CDROM Stylus pen for the touchscreen Power adapter
Certifications	Safety certifications: UL TÜV, CB, BSMI EMI certifications: CE, FCC, BSMI, C-tick Other certifications: WHQL Windows XP Home, Energy Star 4.0
Environment	Operating temperature: 0~35°C Humidity: 0~60%

© 2009 by Shuttle Computer Handels GmbH (Germany). All information subject to change without prior notice. Pictures for illustration purposes only.